



Hughes Airport Center

For Lease

1151 GRIER DRIVE LAS VEGAS, NV



Property Features:

- Located in Hughes Airport Center with Close Proximity to McCarran International Airport, I-15, I-215 and the Las Vegas "Strip"
- First Class 420 Acre 3.3 million sq. ft. Business Park
- Office/Warehouse space from +/-6,096 to 12,192 sq. ft.
- Dock and Grade Doors
- 24' Ceiling Height
- 120/208 Volt – 3 Phase Power, Fire Sprinklers
- 42' X 48' Column Spacing
- Visit www.ciphughes.com



Professionally Managed By:



Voit

REAL ESTATE SERVICES

10100 W. Charleston Blvd. #200
Las Vegas, NV 89135



Contact us for additional information:

702-734-4500 Main
702-733-7690 Fax
www.voitlasvegas.com

Kevin J. Higgins
Senior Vice President
(B.0016109.CORP)



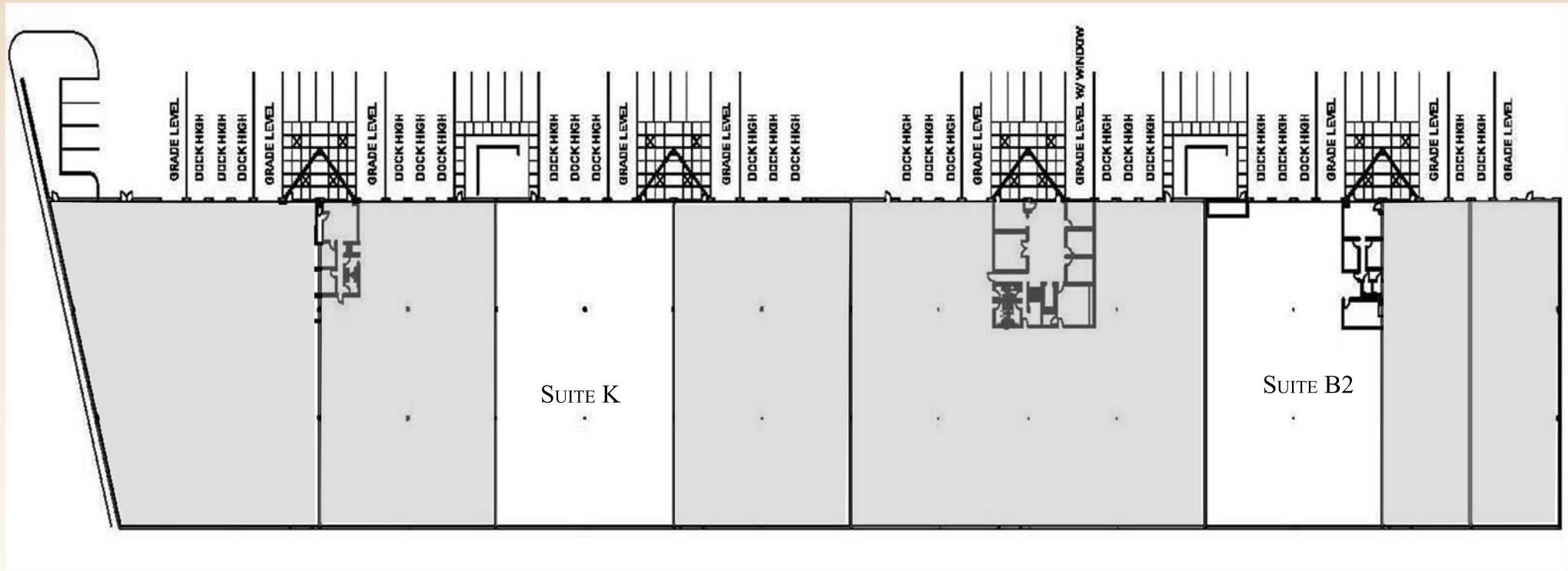
Garrett Toft
Senior Associate
(BS.0061824)

Eric Larkin
Associate
(BS.0073906)



Hughes Airport Center

1151 GRIER DRIVE SITE PLAN



Voit

REAL ESTATE SERVICES

10100 W. Charleston Blvd. #200
Las Vegas, NV 89135



Contact us for additional information:

702-734-4500 Main
702-733-7690 Fax
www.voitlasvegas.com

Kevin J. Higgins
Senior Vice President
(B.0016109.CORP)



Garrett Toft
Senior Associate
(BS.0061824)

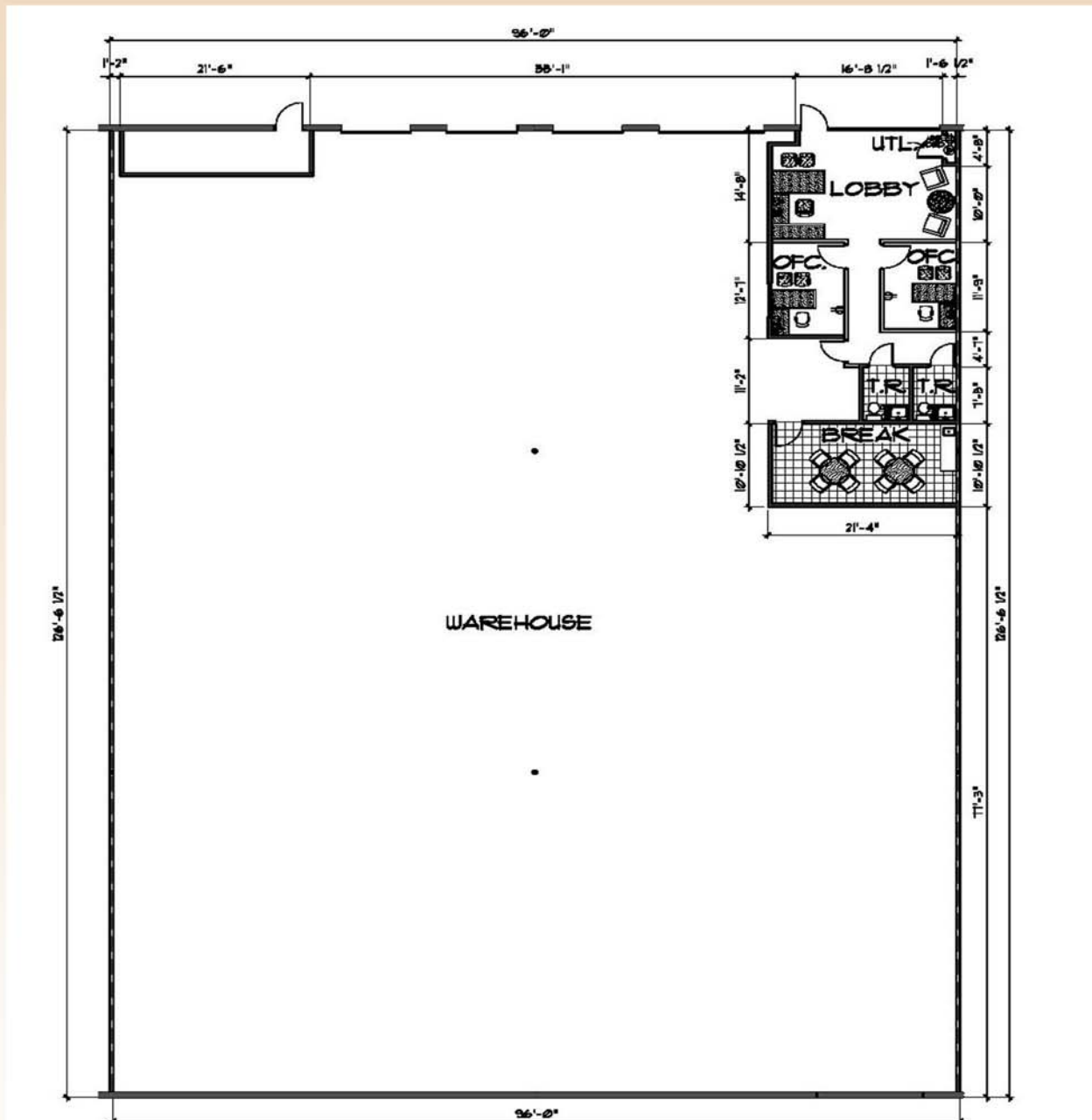
Eric Larkin
Associate
(BS.0073906)

The information contained herein has been obtained from sources we deem reliable. While we have no reason to doubt its accuracy, we do not guarantee it.



Hughes Airport Center

1151 GRIER DRIVE SUITE B2



Voit

REAL ESTATE SERVICES

10100 W. Charleston Blvd. #200
Las Vegas, NV 89135



Contact us for additional information:

702-734-4500 Main
702-733-7690 Fax
www.voitlasvegas.com

Kevin J. Higgins
Senior Vice President
(B.0016109.CORP)



Garrett Toft
Senior Associate
(BS.0061824)

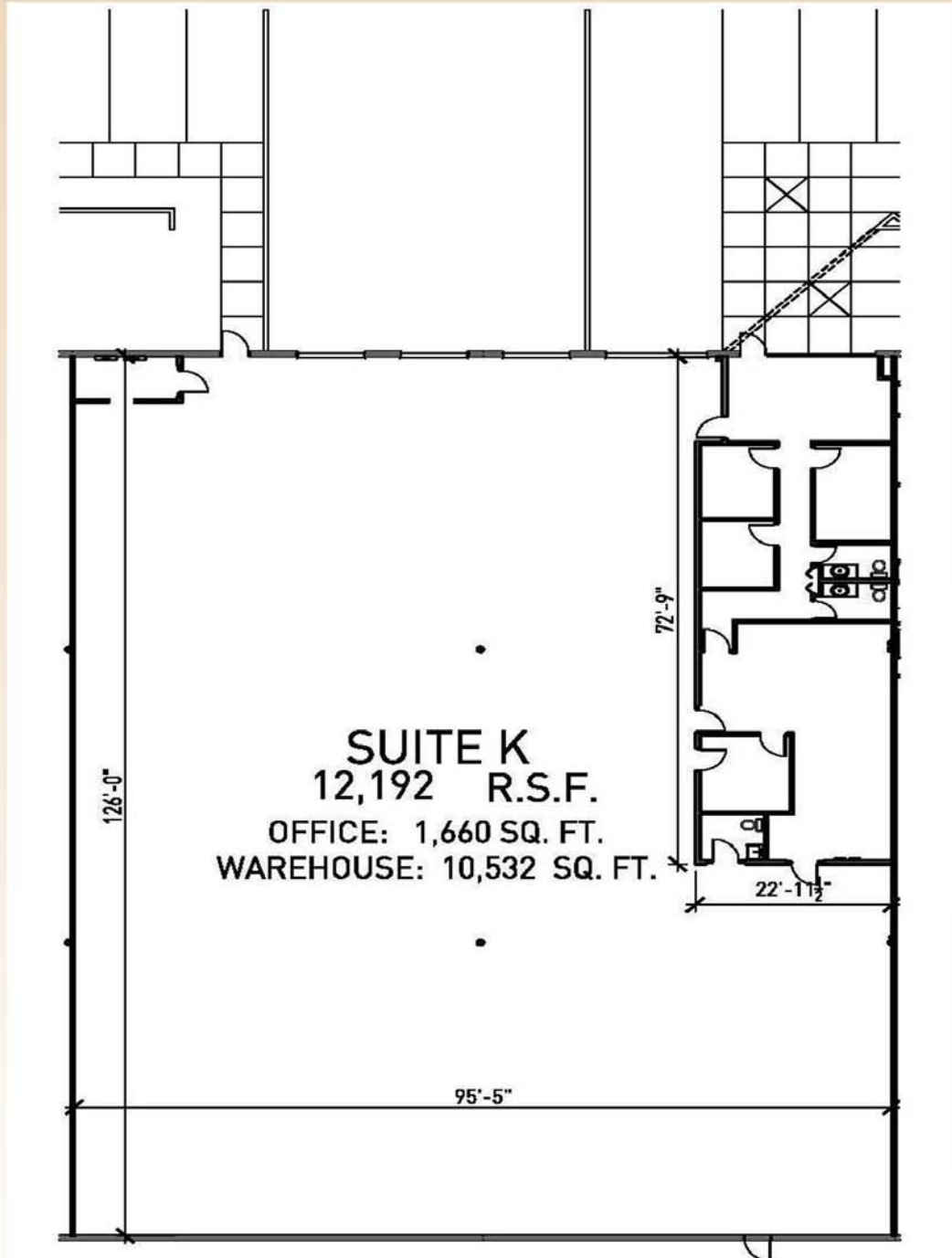
Eric Larkin
Associate
(BS.0073906)



Hughes Airport Center

1151 GRIER DRIVE

SUITE K



Voit

REAL ESTATE SERVICES

10100 W. Charleston Blvd. #200
Las Vegas, NV 89135



Contact us for additional information:

702-734-4500 Main
702-733-7690 Fax
www.voitlasvegas.com

Kevin J. Higgins
Senior Vice President
(B.0016109.CORP)



Garrett Toft
Senior Associate
(BS.0061824)

Eric Larkin
Associate
(BS.0073906)



REAL ESTATE SERVICES

HIGGINS TEAM

Land Sales • Investment Sales • Development Consulting
Landlord & Tenant Representation

10100 W. Charleston Blvd., Suite 200 Las Vegas, NV 89135 | www.voitlasvegas.com
Main 702.734.4500 | Fax 702.733.7690 | higginsteam@voitco.com

Hughes Airport Center
1151 Grier Drive
Las Vegas, NV

Available

Suite B2: ±12,192 sq. ft.
Suite K: ±12,192 sq. ft.

Zoning	Clear Height	Sprinklers	Parking	Electrical
M1	± 24'	Yes	1.09/1000 SF	120/208 V, 3-Phase

Terms						
Suite #	Total SF	Office SF	Dock	Grade	Rate	NNN
B2	±12,192 SF	± 965 SF	3	1	\$0.29*	\$0.1692
K	±12,192 SF	± 1,660 SF	3	1	\$0.29*	\$0.1692

Comments

Landlord is now offering **COMMISSION BONUSES!** Call for details.

* Rates quoted are for the 1st year of a minimum 3 year lease term.

Contacts

Kevin Higgins
Senior Vice President, SIOR

702.734.4500
khiggins@voitco.com

Garrett Toft
Senior Associate

702.734.4503
gtoft@voitco.com

Eric Larkin
Associate

702.734.4533
elarkin@voitco.com