



# Hughes Airport Center

# For Lease



## Property Features:

- Located in Hughes Airport Center with Close Proximity to McCarran International Airport, I-15, I-215 and the Las Vegas "Strip"
- First Class 420 Acre 3.3 million sq. ft. Business Park
- Suite G is +/-11,882 sq. ft. of Office/Warehouse Space
- Rear Loading with Dock and Grade Doors
- 22' Ceiling Height
- 277/480 Volt - 3 Phase Power, Fire Sprinklers
- Visit [www.ciphughes.com](http://www.ciphughes.com)



Professionally Managed By:



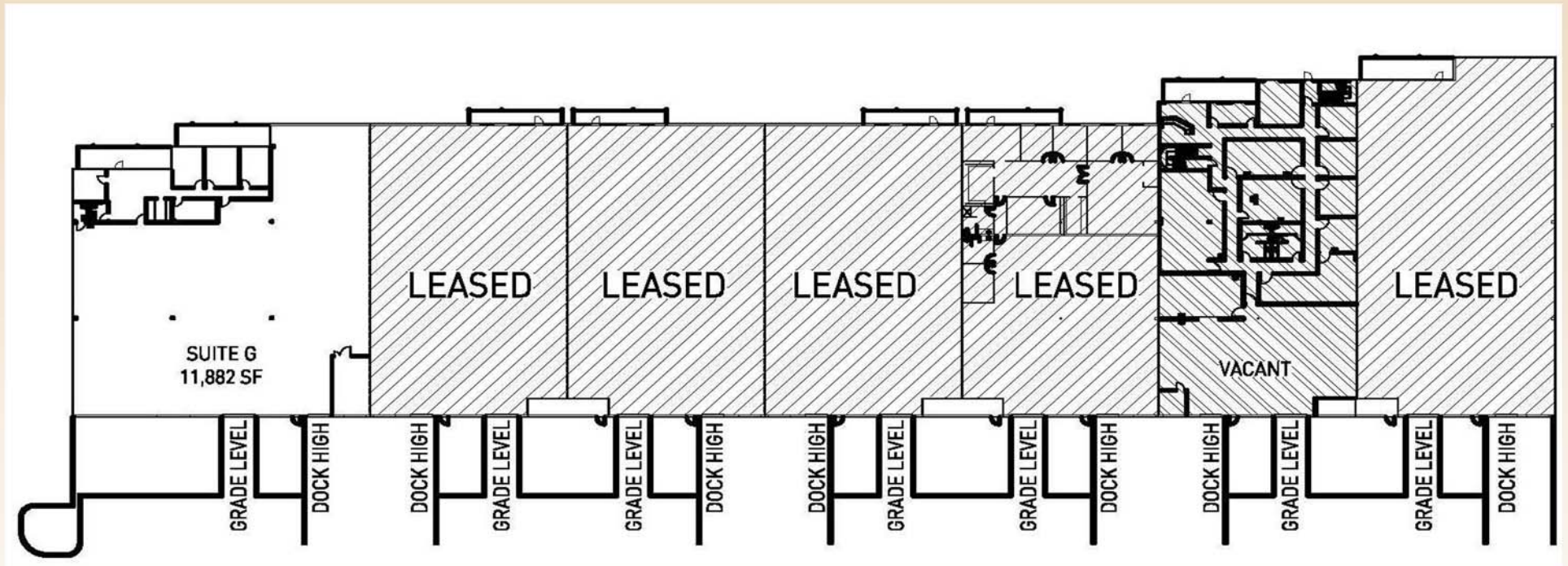
Contact us for additional information:  
702.734.4500 Main  
702.733.7690 Fax  
[www.voitlasvegas.com](http://www.voitlasvegas.com)

Kevin Higgins  
Sr. Vice President   
Garrett Toft  
Senior Associate



# Hughes Airport Center

# 1181 GRIER RD SITE PLAN



**Voit**  
Commercial Brokerage

Contact us for additional information:  
702.734.4500 Main  
702.733.7690 Fax  
[www.voitlasvegas.com](http://www.voitlasvegas.com)

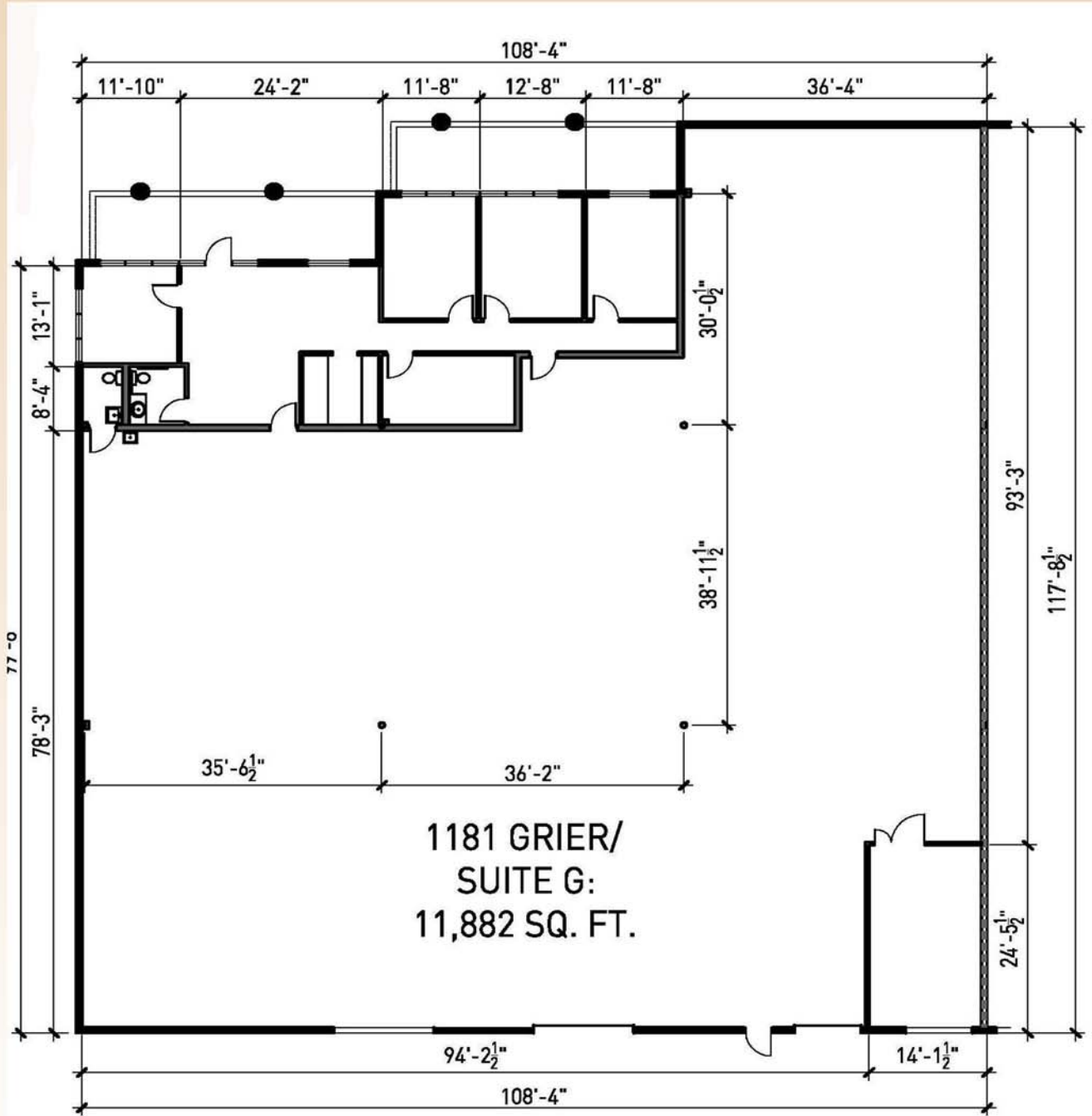
Kevin Higgins   
Sr. Vice President  
Garrett Toft  
Senior Associate



Hughes Airport Center

For Lease

1181 GRIER DRIVE



**Voit**  
Commercial Brokerage

Contact us for additional information:  
702.734.4500 Main  
702.733.7690 Fax  
[www.voitlasvegas.com](http://www.voitlasvegas.com)

Kevin Higgins  
Sr. Vice President  
Garrett Toft  
Senior Associate





# HIGGINS TEAM

Land Sales • Investment Sales • Development Consulting  
Landlord & Tenant Representation

10100 W. Charleston Blvd., Suite 200 Las Vegas, NV 89135 | www.voitlasvegas.com  
Main 702.734.4500 | Fax 702.733.7690 | higginsteam@voitco.com

**Hughes Airport Center**  
**1181 Grier Drive**  
**Las Vegas, NV**

### Available

Suite G: ±11,882 sq. ft.

Zoning	Clear Height	Sprinklers	Parking	Electrical
M1	± 22'	Yes	2.16/1000 SF	3-Phase

Terms						
Suite #	Total SF	Office SF	Dock	Grade	Rate	NNN
G	±11,882 SF	±1,643 SF	1	1	\$0.75	\$0.2119

### Comments

1181 Grier Drive is located within the Hughes Airport Center, a first class 420-acre business park, with close proximity to McCarran International Airport, I-15, I-215 and the Las Vegas "Strip". This is an end cap suite.

### Contacts

**Kevin Higgins**  
*Senior Vice President, SIOR*

702.734.4500  
khiggins@voitco.com

**Garrett Toft**  
*Senior Associate*

702.734.4503  
gtoft@voitco.com