



# Hughes Airport Center

# For Lease

## 600 PILOT ROAD

LAS VEGAS, NV



### Property Features:

- Located in Hughes Airport Center with Close Proximity to McCarran International Airport, I-15, I-215 and the Las Vegas "Strip"
- First Class 420 Acre 3.3 million sq. ft. Business Park
- Suite A is +/-13,708 sq. ft.
- Previous Call Center
- Parking Ratio: 5.75/1000rsf
- Fire Sprinklers, HVAC, Tilt Up Construction
- Visit [www.ciphughes.com](http://www.ciphughes.com)



Professionally Managed By:



# Voit

REAL ESTATE SERVICES

10100 W. Charleston Blvd. #200  
Las Vegas, NV 89135



Contact us for additional information:

702-734-4500 Main  
702-733-7690 Fax  
[www.voitlasvegas.com](http://www.voitlasvegas.com)

Kevin J. Higgins  
Senior Vice President  
(B.0016109.CORP)



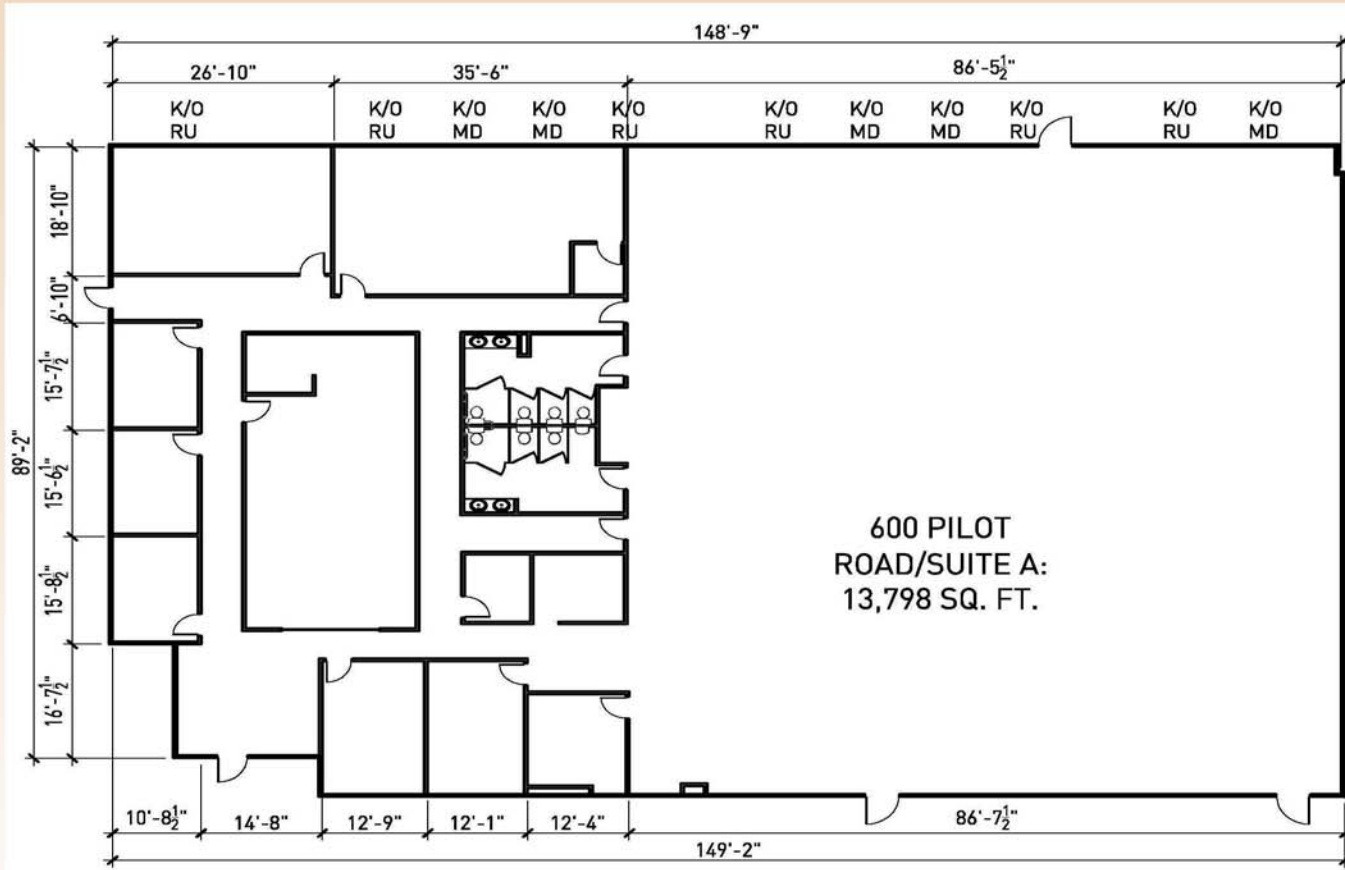
Garrett Toft  
Senior Associate  
(BS.0061824)

Eric Larkin  
Associate  
(BS.0073906)



# Hughes Airport Center

# 600 PILOT RD SUITE A



## Voit

REAL ESTATE SERVICES

10100 W. Charleston Blvd. #200  
Las Vegas, NV 89135



Contact us for additional information:

702-734-4500 Main

702-733-7690 Fax

[www.voitlasvegas.com](http://www.voitlasvegas.com)

Kevin J. Higgins

Senior Vice President  
(B.0016109.CORP)



Garrett Toft

Senior Associate  
(BS.0061824)

Eric Larkin

Associate  
(BS.0073906)

The information contained herein has been obtained from sources we deem reliable. While we have no reason to doubt its accuracy, we do not guarantee it.



10100 W. Charleston Blvd., Suite 200 Las Vegas, NV 89135 | www.voitlasvegas.com  
 Main 702.734.4500 | Fax 702.733.7690 | higginsteam@voitco.com

Hughes Airport Center  
 600 Pilot Road  
 Las Vegas, NV

Available	
Suite A	±13,708 sq. ft.

Zoning	Sprinklers	Parking
M1	Yes	5.75/1000 SF

Terms				
Suite #	Total SF	Office SF	Rate	NNN
A	±13,708	±13,708	\$0.59 *	\$0.2931

**Comments**  
 This office building fronts Pilot Road and currently has one finished suite available for immediate occupancy. This versatile unit is equipped with a number of large offices, conference rooms, a server room, lobby and an open bullpen to accommodate a variety of users. This suite also offers the flexibility of a possible warehouse space utilizing the knock out panel in the rear portion of the unit.

Landlord is now offering **COMMISSION BONUSES!** Call for details.

\* Rates quoted are for the 1<sup>st</sup> year of a minimum 3 year lease term.

**Contacts**

<b>Kevin Higgins</b> <i>Senior Vice President, SIOR</i>  702.734.4500 khiggins@voitco.com	<b>Garrett Toft</b> <i>Senior Associate</i>  702.734.4503 gtoft@voitco.com	<b>Eric Larkin</b> <i>Associate</i>  702.734.4533 elarkin@voitco.com
---	--	--