



# Hughes Airport Center

# For Lease

## 6600 BERMUDA ROAD

### LAS VEGAS, NV



### Property Features:

- Located in Hughes Airport Center with Close Proximity to McCarran International Airport, I-15, I-215 and the Las Vegas "Strip"
- First Class 420 Acre 3.3 million sq. ft. Business Park
- Suite A is +/-15,207 sq. ft.
- Previous Data Center
- Parking Ratio: 4.8/1,000
- Grade Loading Possible
- Visit [www.ciphughes.com](http://www.ciphughes.com)



Professionally Managed By:



## Voit

REAL ESTATE SERVICES

10100 W. Charleston Blvd. #200  
Las Vegas, NV 89135



Contact us for additional information:

702-734-4500 Main

702-733-7690 Fax

[www.voitlasvegas.com](http://www.voitlasvegas.com)

Kevin J. Higgins   
Senior Vice President  
(B.0016109.CORP)

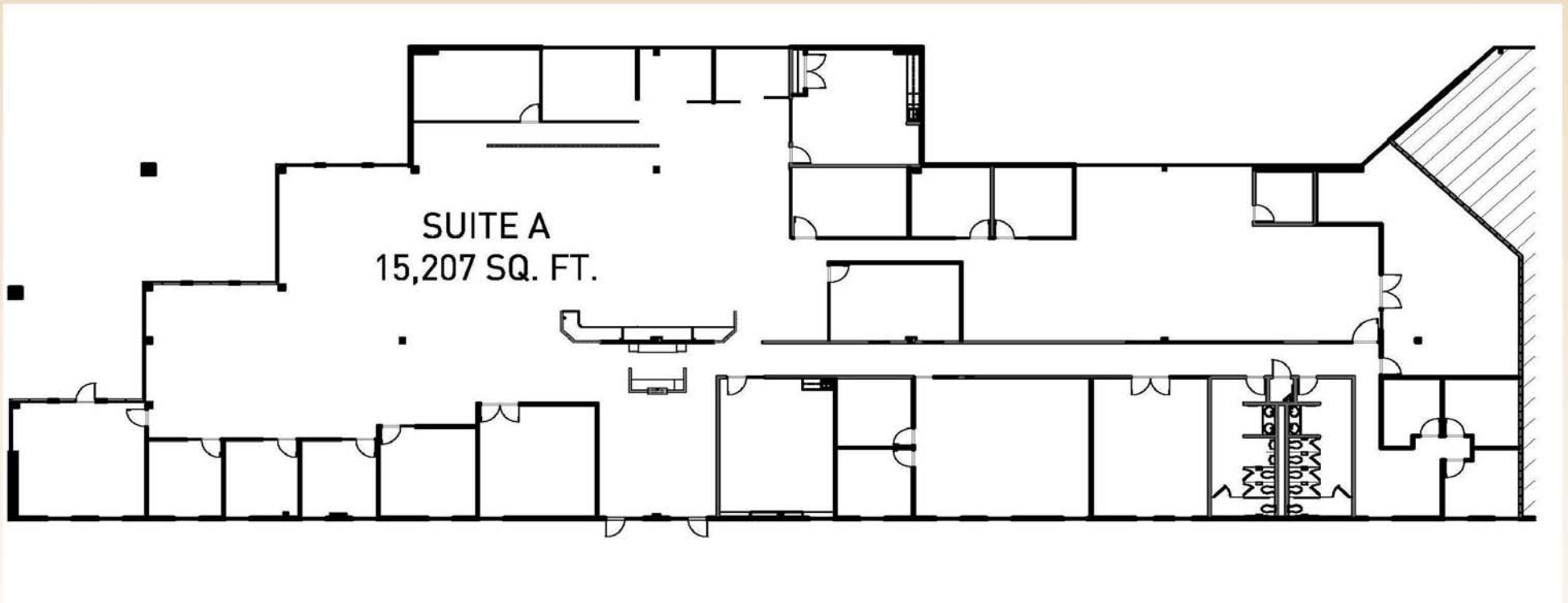
Garrett Toft  
Senior Associate  
(BS.0061824)

Eric Larkin  
Associate  
(BS.0073906)



Hughes Airport Center

6600 BERMUDA RD.  
SUITE A



**Voit**

REAL ESTATE SERVICES

10100 W. Charleston Blvd. #200  
Las Vegas, NV 89135



Contact us for additional information:

702-734-4500 Main  
702-733-7690 Fax  
[www.voitlasvegas.com](http://www.voitlasvegas.com)

Kevin J. Higgins  
Senior Vice President  
(B.0016109.CORP)



Garrett Toft  
Senior Associate  
(BS.0061824)

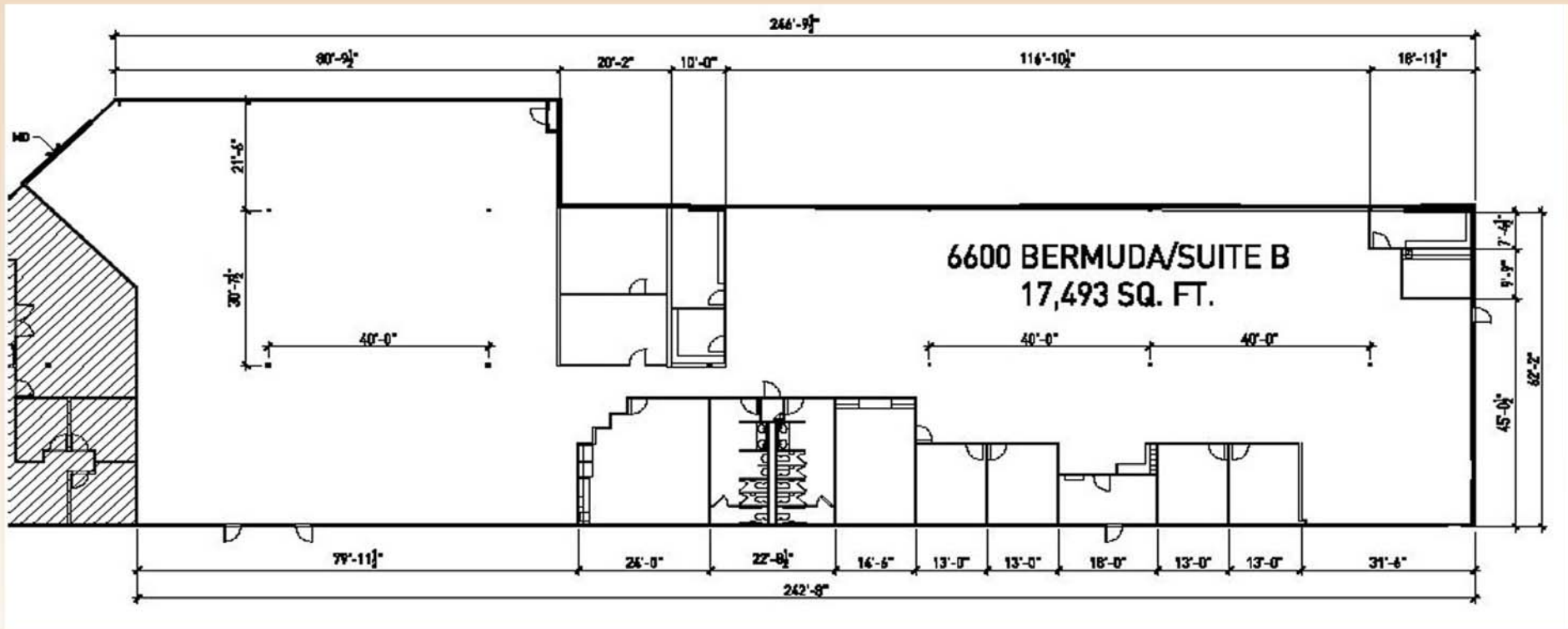
Eric Larkin  
Associate  
(BS.0073906)

The information contained herein has been obtained from sources we deem reliable. While we have no reason to doubt its accuracy, we do not guarantee it.



# Hughes Airport Center

# 6600 BERMUDA RD. SUITE B



## Voit

REAL ESTATE SERVICES

10100 W. Charleston Blvd. #200  
Las Vegas, NV 89135



Contact us for additional information:

702-734-4500 Main  
702-733-7690 Fax  
[www.voitlasvegas.com](http://www.voitlasvegas.com)

Kevin J. Higgins  
Senior Vice President  
(B.0016109.CORP)



Garrett Toft  
Senior Associate  
(BS.0061824)

Eric Larkin  
Associate  
(BS.0073906)

The information contained herein has been obtained from sources we deem reliable. While we have no reason to doubt its accuracy, we do not guarantee it.



REAL ESTATE SERVICES



Land Sales • Investment Sales • Development Consulting  
Landlord & Tenant Representation

10100 W. Charleston Blvd., Suite 200 Las Vegas, NV 89135 | www.voitlasvegas.com  
Main 702.734.4500 | Fax 702.733.7690 | higginsteam@voitco.com

Hughes Airport Center  
6600 Bermuda Road  
Las Vegas, NV

Available

Suite A ±15,207 sq. ft.  
Suite B ±17,493 sq. ft.

Zoning	Clear Height	Sprinklers	Parking	Electrical
M1	± 9'	Yes	4.8/1,000 Up to 10/1,000	120/240 V Single Phase

Terms	Suite #	Total SF	Office SF	Rate	NNN
	A	±15,207	±15,207	\$1.25	\$0.2627
	B	±17,493	±17,493	\$1.25	\$0.2627

Comments

This former data center is parked at 4.8/1,000 and is equipped with a knockout panel in the rear of the building to accommodate a wide variety of corporate users.

Landlord is now offering **COMMISSION BONUSES!** Call for details.

Contacts

Kevin Higgins  
*Senior Vice President, SIOR*

702.734.4500  
khiggins@voitco.com

Garrett Toft  
*Senior Associate*

702.734.4503  
gtoft@voitco.com

Eric Larkin  
*Associate*

702.734.4533  
elarkin@voitco.com