



Hughes Airport Center

For Lease

6700 PARADISE ROAD LAS VEGAS, NV



Property Features:

- Located in Hughes Airport Center with Close Proximity to McCarran International Airport, I-15, I-215 and the Las Vegas "Strip"
- First Class 420 Acre 3.3 million sq. ft. Business Park
- Excellent Paradise Road Frontage
- 16' Ceiling Height
- 120/208 Volt – 3 Phase Power, Fire Sprinklers
- Parking Ratio: 2.1/1,000
- Visit www.ciphughes.com



Professionally Managed By:



Voit

REAL ESTATE SERVICES

10100 W. Charleston Blvd. #200
Las Vegas, NV 89135



Contact us for additional information:

702-734-4500 Main
702-733-7690 Fax
www.voitlasvegas.com

Kevin J. Higgins
Senior Vice President
(B.0016109.CORP)



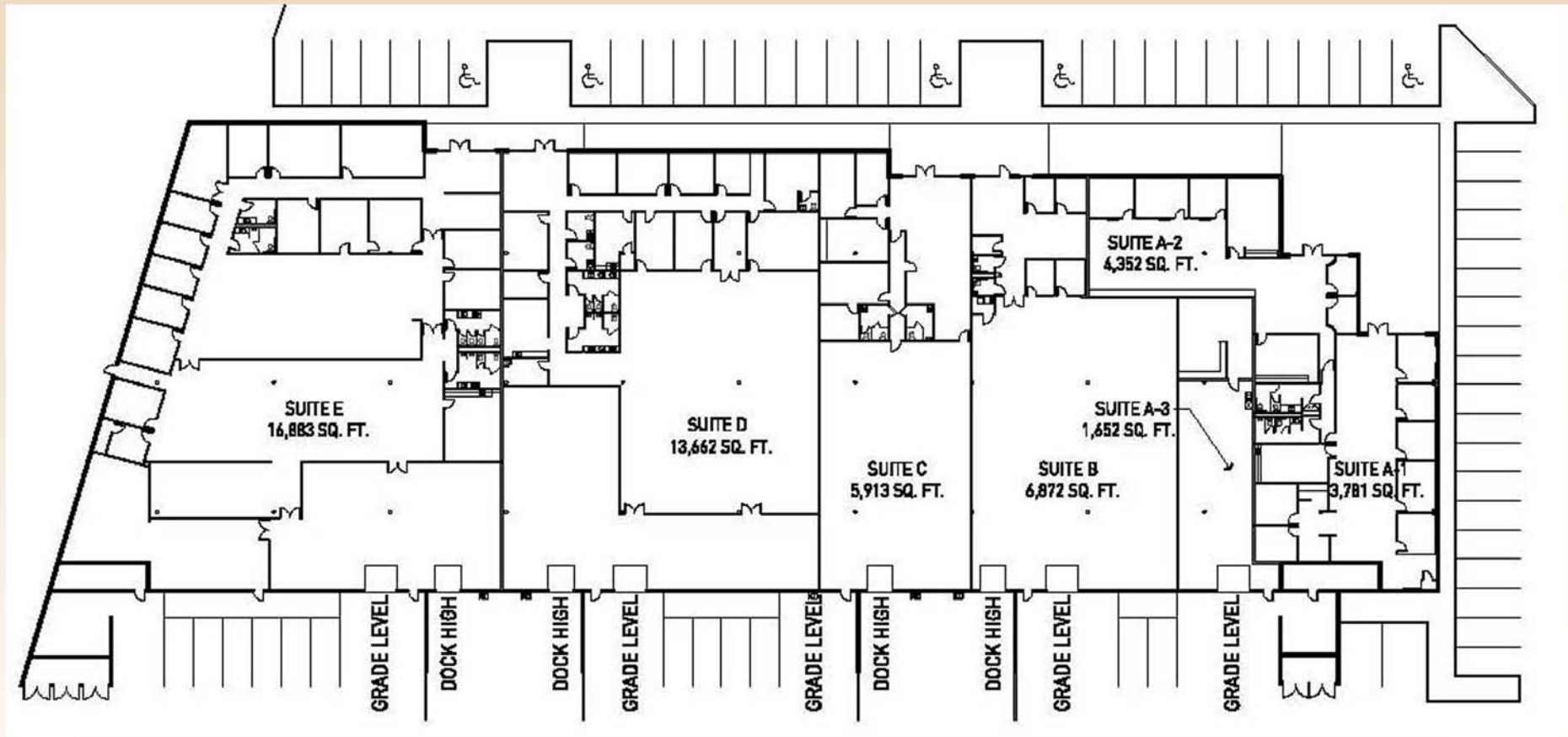
Garrett Toft
Senior Associate
(BS.0061824)

Eric Larkin
Associate
(BS.0073906)



Hughes Airport Center

6700 PARADISE ROAD SITE PLAN



Voit

REAL ESTATE SERVICES

10100 W. Charleston Blvd. #200
Las Vegas, NV 89135



Contact us for additional information:

702-734-4500 Main
702-733-7690 Fax
www.voitlasvegas.com

Kevin J. Higgins 
Senior Vice President
(B.0016109.CORP)

Garrett Toft
Senior Associate
(BS.0061824)

Eric Larkin
Associate
(BS.0073906)

The information contained herein has been obtained from sources we deem reliable. While we have no reason to doubt its accuracy, we do not guarantee it.

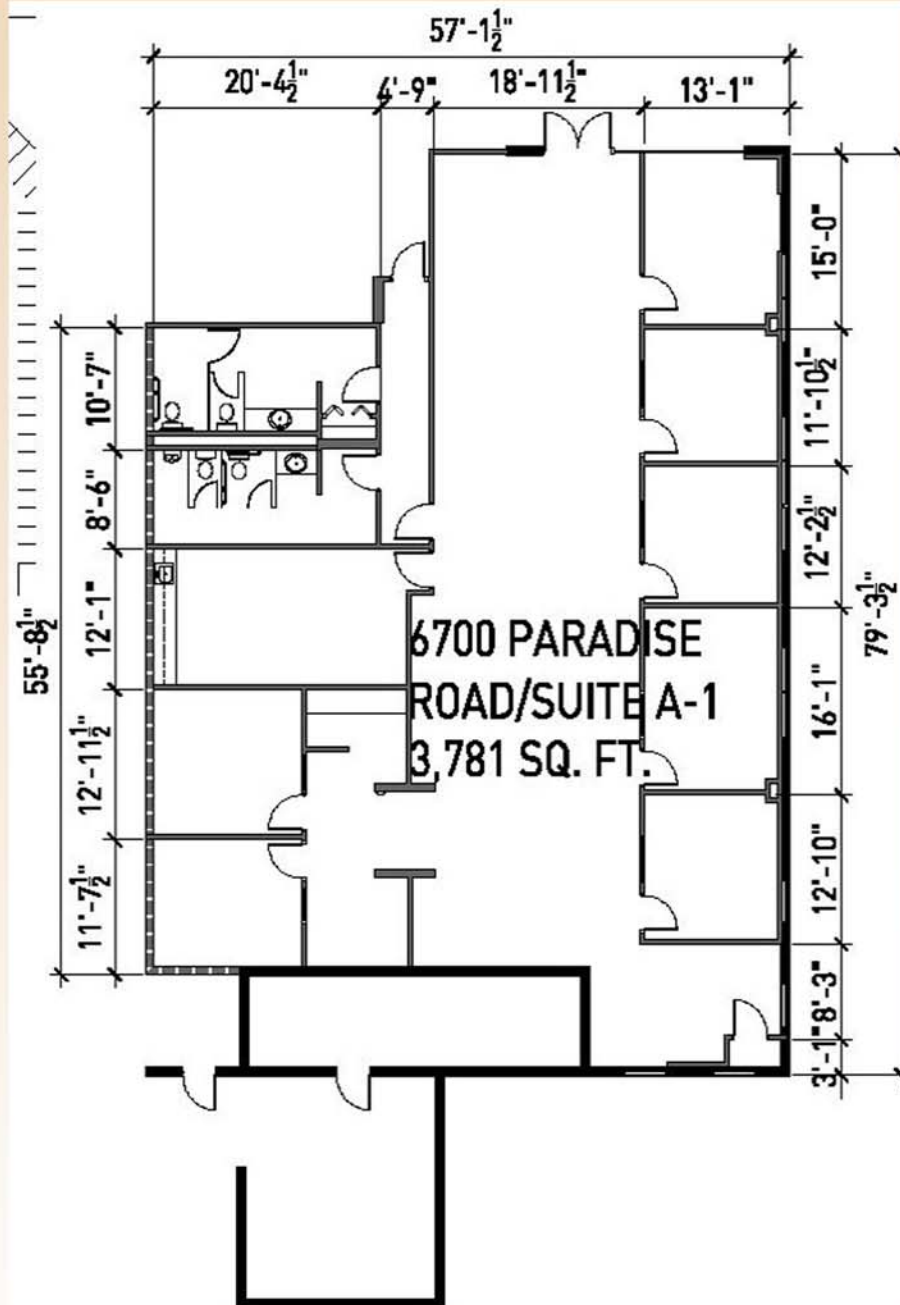


Hughes Airport Center

For Lease

6700 PARADISE ROAD

SUITE A-1



Voit

REAL ESTATE SERVICES

10100 W. Charleston Blvd. #200
Las Vegas, NV 89135



Contact us for additional information:

702-734-4500 Main

702-733-7690 Fax

www.voitlasvegas.com

Kevin J. Higgins

Senior Vice President
(B.0016109.CORP)



Garrett Toft

Senior Associate
(BS.0061824)

Eric Larkin

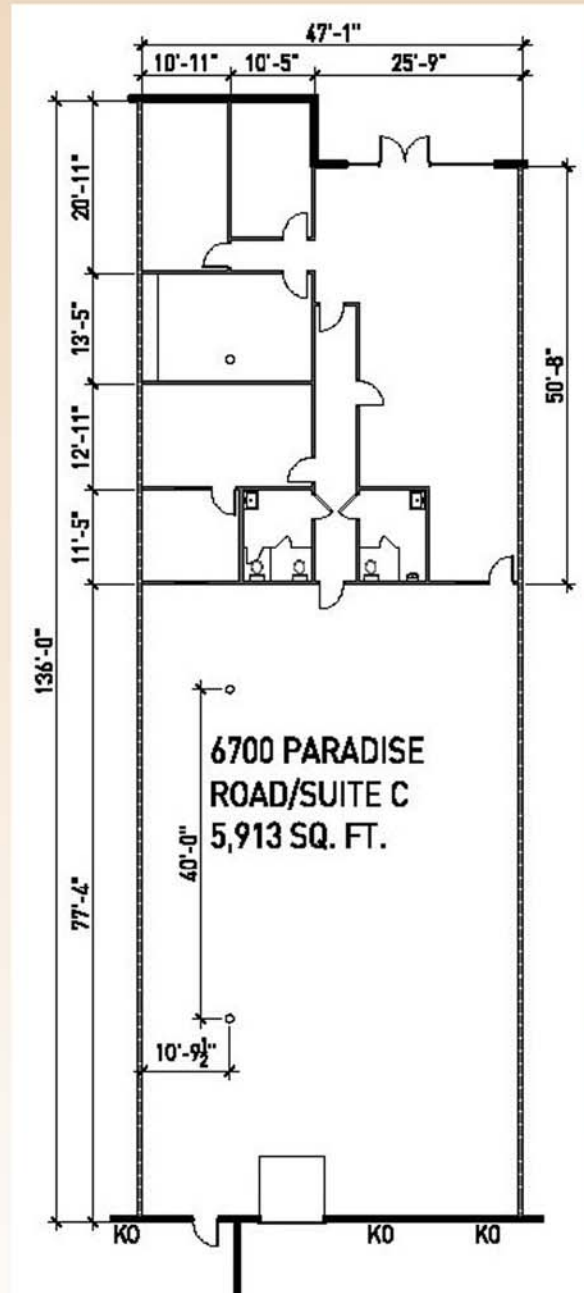
Associate
(BS.0073906)



Hughes Airport Center

For Lease

6700 PARADISE ROAD SUITE C



Voit

REAL ESTATE SERVICES

10100 W. Charleston Blvd. #200
Las Vegas, NV 89135



Contact us for additional information:

702-734-4500 Main

702-733-7690 Fax

www.voitlasvegas.com

Kevin J. Higgins
Senior Vice President
(B.0016109.CORP)



Garrett Toft
Senior Associate
(BS.0061824)

Eric Larkin
Associate
(BS.0073906)

The information contained herein has been obtained from sources we deem reliable. While we have no reason to doubt its accuracy, we do not guarantee it.



REAL ESTATE SERVICES



Land Sales • Investment Sales • Development Consulting
Landlord & Tenant Representation

10100 W. Charleston Blvd., Suite 200 Las Vegas, NV 89135 | www.voitlasvegas.com
Main 702.734.4500 | Fax 702.733.7690 | higginsteam@voitco.com

Hughes Airport Center
6700 Paradise Road
Las Vegas, NV

Available

Suite A-1 ±3,781 sq. ft
Suite C ±5,913 sq. ft.

Zoning	Clear Height	Sprinklers	Parking	Electrical
M1	± 16'	Yes	2.48/1000 SF	120/208 V, 3-Phase

Terms						
Suite #	Total SF	Office SF	Dock	Grade	Rate	NNN
A-1	± 3,781	± 3,781	N/A	N/A	\$1.35	\$0.2867
C	±5,913	±2,500	1	1	\$0.75	\$0.2342

Comments

Suite A-1: This end cap suite is 100% office space with frontage on Paradise Rd.

Suite C: This rear loading unit features a reception area, several private offices and an extremely functional warehouse area.

Landlord is now offering **COMMISSION BONUSES!** Call for details.

Contacts

Kevin Higgins
Senior Vice President, SIOR

702.734.4500
khiggins@voitco.com

Garrett Toft
Senior Associate

702.734.4503
gtoft@voitco.com

Eric Larkin
Associate

702.734.4533
elarkin@voitco.com