



# Hughes Airport Center

# For Lease

## 680 PILOT ROAD

LAS VEGAS, NV



### Property Features:

- Located in Hughes Airport Center with Close Proximity to McCarran International Airport, I-15, I-215 and the Las Vegas "Strip"
- First Class 420 Acre 3.3 million sq. ft. Business Park
- Highly Finished, "Class A" Office Space/Flex Space
- Extremely Functional Floor Plan
- End Cap Suite Available
- Fire Sprinklers, HVAC, Title Up Construction
- Visit [www.ciphughes.com](http://www.ciphughes.com)



Professionally Managed By:



# Voit

REAL ESTATE SERVICES

10100 W. Charleston Blvd. #200  
Las Vegas, NV 89135



Contact us for additional information:

702-734-4500 Main  
702-733-7690 Fax  
[www.voitlasvegas.com](http://www.voitlasvegas.com)

Kevin J. Higgins  
Senior Vice President  
(B.0016109.CORP)



Garrett Toft  
Senior Associate  
(BS.0061824)

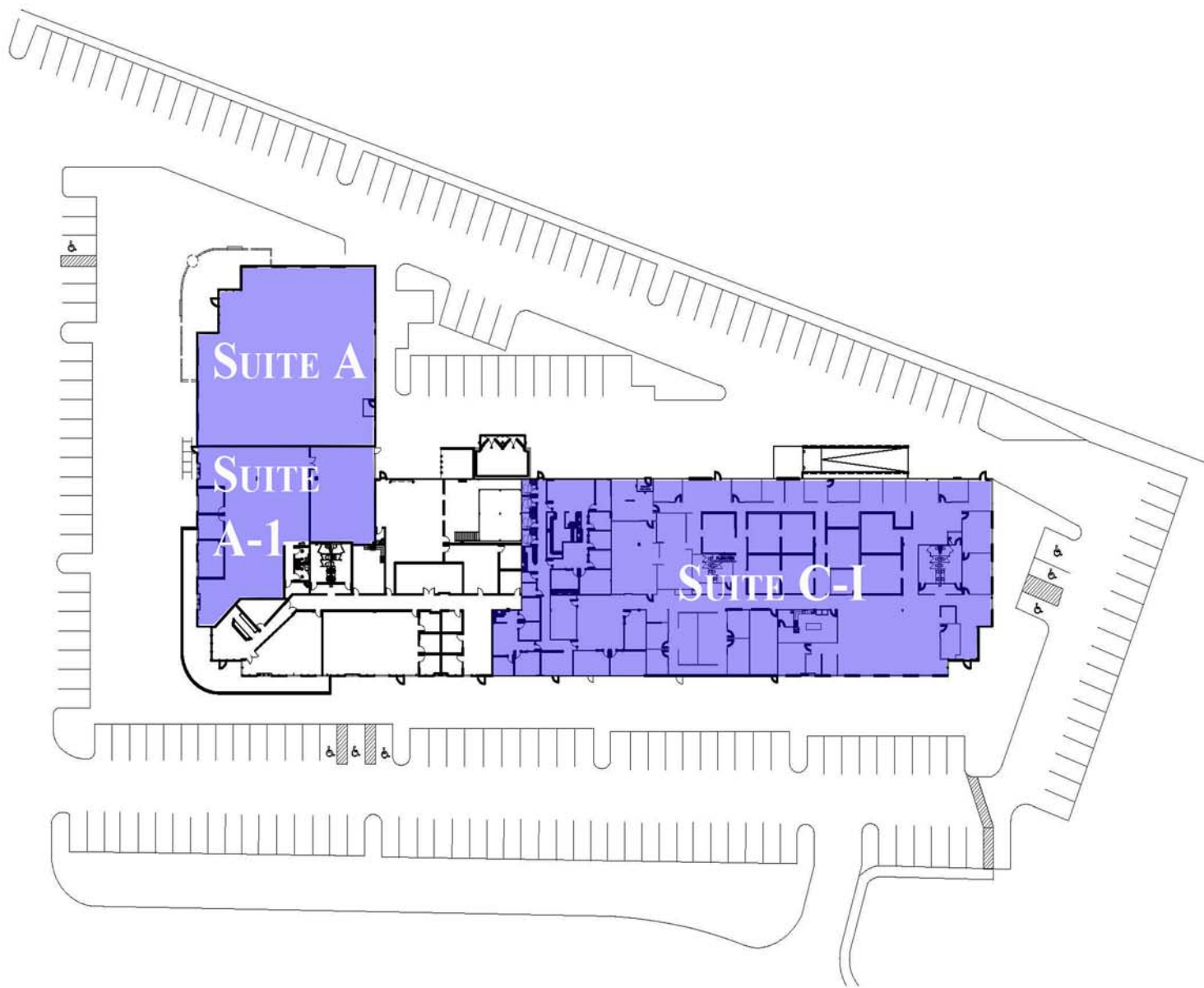
Eric Larkin  
Associate  
(BS.0073906)



Hughes Airport Center

For Lease

680 PILOT ROAD



**Voit**

REAL ESTATE SERVICES

10100 W. Charleston Blvd. #200  
Las Vegas, NV 89135



Contact us for additional information:

702-734-4500 Main

702-733-7690 Fax

[www.voitlasvegas.com](http://www.voitlasvegas.com)

Kevin J. Higgins

Senior Vice President  
(B.0016109.CORP)



Garrett Toft

Senior Associate  
(BS.0061824)

Eric Larkin

Associate  
(BS.0073906)

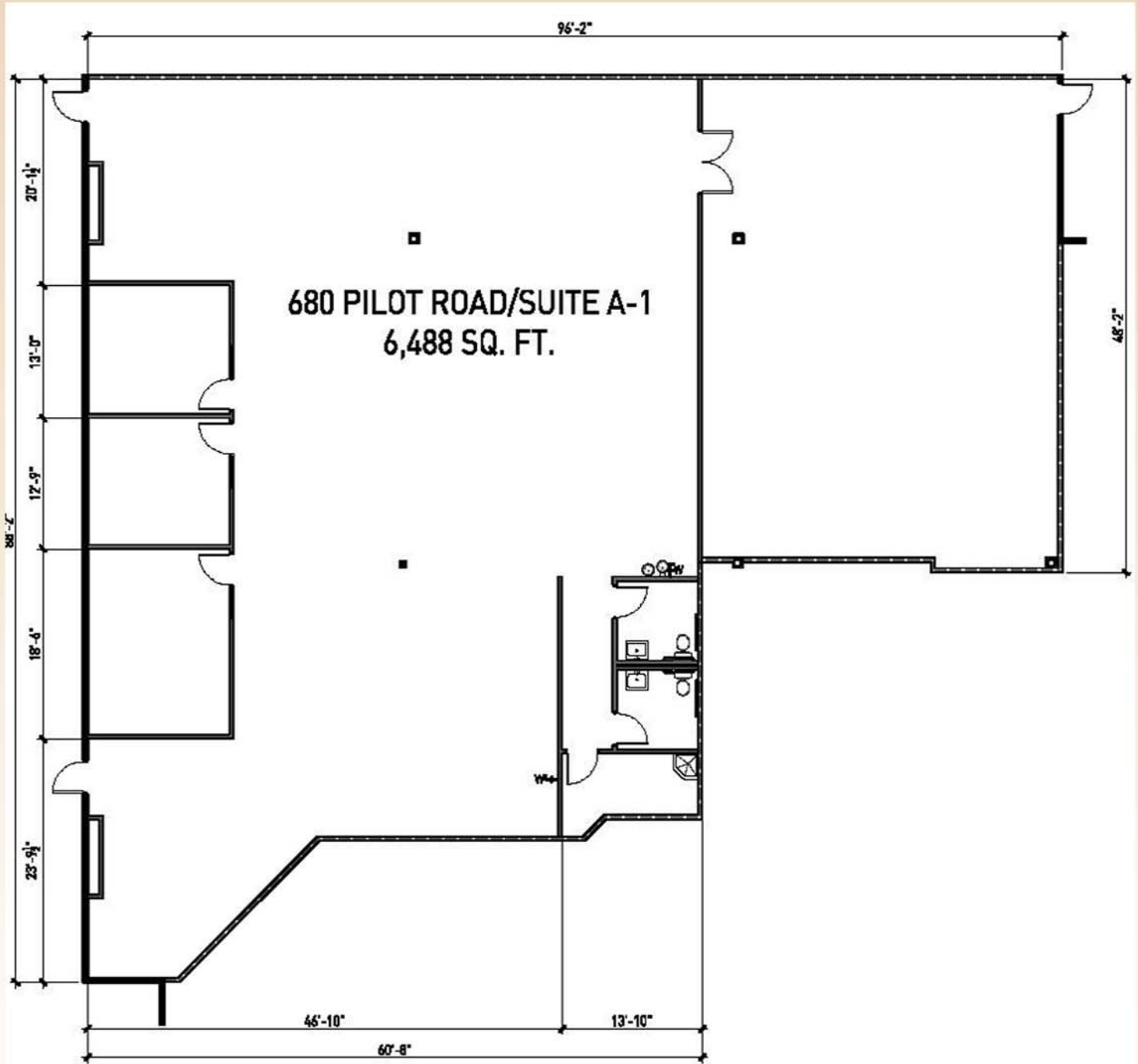
The information contained herein has been obtained from sources we deem reliable. While we have no reason to doubt its accuracy, we do not guarantee it.



Hughes Airport Center

For Lease

680 PILOT ROAD



**Voit**

REAL ESTATE SERVICES

10100 W. Charleston Blvd. #200  
Las Vegas, NV 89135



Contact us for additional information:

702-734-4500 Main  
702-733-7690 Fax  
[www.voitlasvegas.com](http://www.voitlasvegas.com)

Kevin J. Higgins  
Senior Vice President  
(B.0016109.CORP)



Garrett Toft  
Senior Associate  
(BS.0061824)

Eric Larkin  
Associate  
(BS.0073906)

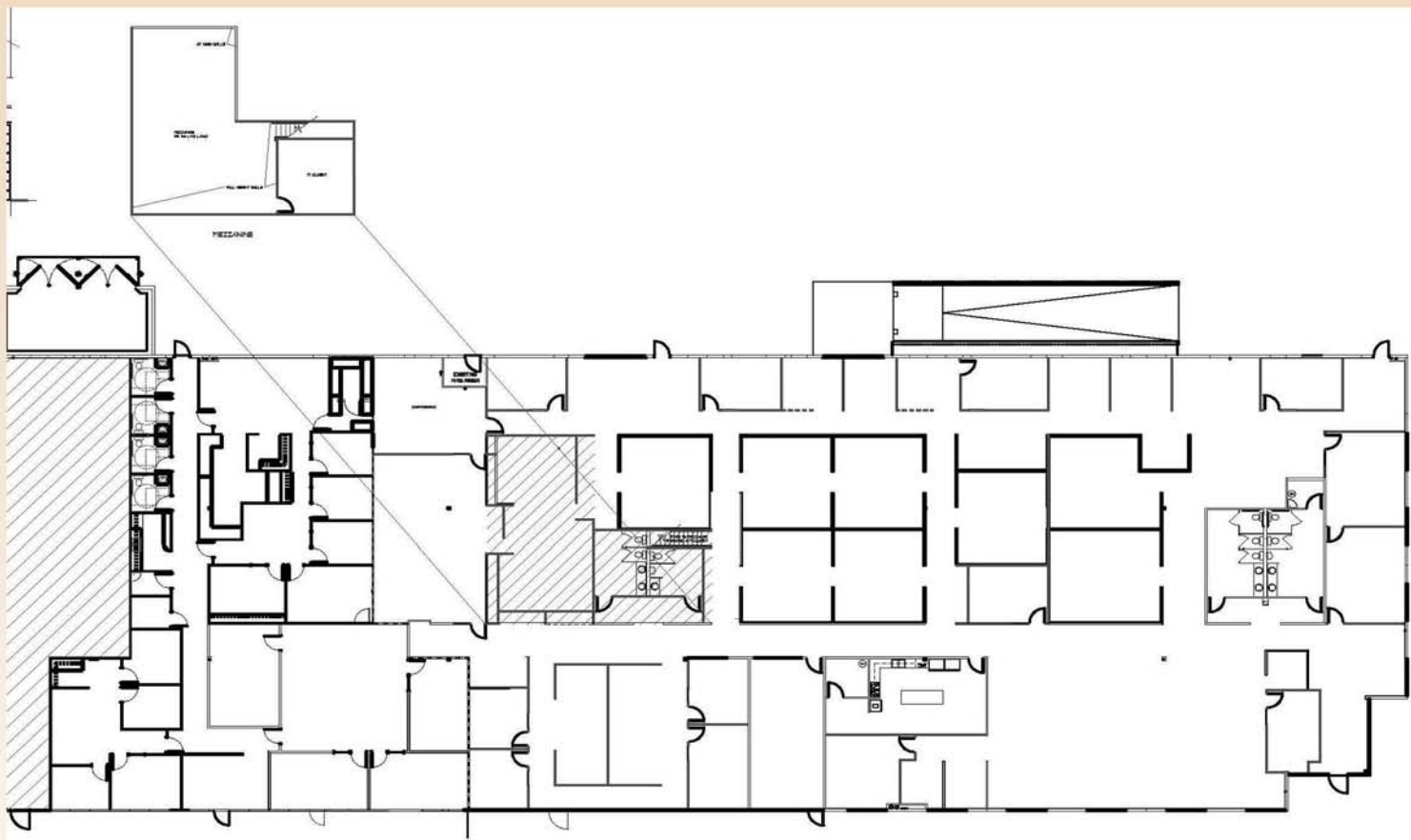


Hughes Airport Center

For Lease

680 PILOT RD

SUITE C-I



**Voit**

REAL ESTATE SERVICES

10100 W. Charleston Blvd. #200  
Las Vegas, NV 89135



Contact us for additional information:

702-734-4500 Main

702-733-7690 Fax

[www.voitlasvegas.com](http://www.voitlasvegas.com)

Kevin J. Higgins  
Senior Vice President  
(B.0016109.CORP)



Garrett Toft  
Senior Associate  
(BS.0061824)

Eric Larkin  
Associate  
(BS.0073906)

The information contained herein has been obtained from sources we deem reliable. While we have no reason to doubt its accuracy, we do not guarantee it.



REAL ESTATE SERVICES



Land Sales • Investment Sales • Development Consulting  
Landlord & Tenant Representation

10100 W. Charleston Blvd., Suite 200 Las Vegas, NV 89135 | www.voitlasvegas.com  
Main 702.734.4500 | Fax 702.733.7690 | higginsteam@voitco.com

Hughes Airport Center  
680 Pilot Road  
Las Vegas, NV

Available

Suite A	± 8,045 sq. ft.
Suite A1	± 6,488 sq. ft.
Suite C-I	± 25,086 sq. ft.

Zoning	Sprinklers	Parking
M-1	Yes	4.11/1000 SF

Terms						
Suite #	Total SF	Office SF	Warehouse SF	Grade Door	Rate	NNN
A	±8,045	±8,045	±0	1	\$0.59* NNN	\$0.2906
A1	±6,488	±4,733	±1,652	1	\$0.59* NNN	\$0.2906
C-I	±25,086	±25,086	±0	1	\$0.59* NNN	\$0.2906

Comments

Landlord is now offering **COMMISSION BONUSES!** Call for details.

\* Rates quoted are for the 1<sup>st</sup> year of a minimum 3 year lease term.

Contacts

<b>Kevin Higgins</b> <i>Senior Vice President, SIOR</i>  702.734.4500 khiggins@voitco.com	<b>Garrett Toft</b> <i>Senior Associate</i>  702.734.4503 gtoft@voitco.com	<b>Eric Larkin</b> <i>Associate</i>  702.734.4533 elarkin@voitco.com
---	--	--