



Hughes Airport Center

For Lease

815 PILOT ROAD

LAS VEGAS, NV



Property Features:

- Located in Hughes Airport Center with Close Proximity to McCarran International Airport, I-15, I-215 and the Las Vegas "Strip"
- First Class 420 Acre 3.3 million sq. ft. Business Park
- Rear Loading Flex Building
- Expansive Glass Line
- Secured Fenced Dock/Grade Loading Area
- Fire Sprinklers, HVAC, Tilt Up Construction
- Parking ratio: 2.43/1,000rsf



Professionally Managed By:

Visit www.ciphughes.com



REAL ESTATE



REAL ESTATE SERVICES

10100 W. Charleston Blvd. #200
Las Vegas, NV 89135



Contact us for additional information:

702-734-4500 Main

702-733-7690 Fax

www.voitlasvegas.com

Kevin J. Higgins

Senior Vice President
(B.0016109.CORP)



Garrett Toft

Senior Associate
(BS.0061824)

Eric Larkin

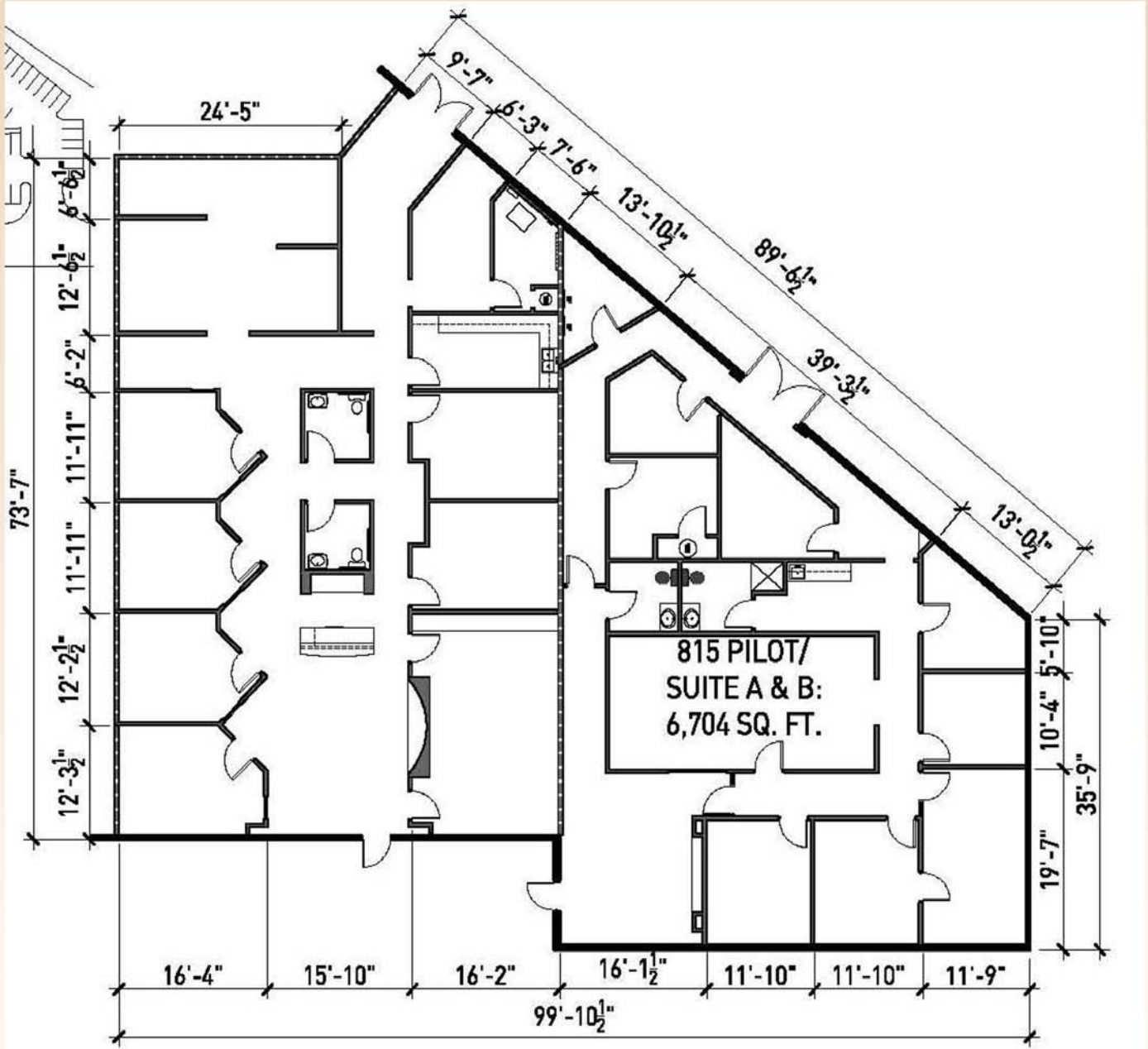
Associate
(BS.0073906)



Hughes Airport Center

For Lease

815 PILOT RD. SUITE A & B



Voit

REAL ESTATE SERVICES

10100 W. Charleston Blvd. #200
Las Vegas, NV 89135



Contact us for additional information:

702-734-4500 Main

702-733-7690 Fax

www.voitlasvegas.com

Kevin J. Higgins

Senior Vice President
(B.0016109.CORP)



Garrett Toft

Senior Associate
(BS.0061824)

Eric Larkin

Associate
(BS.0073906)

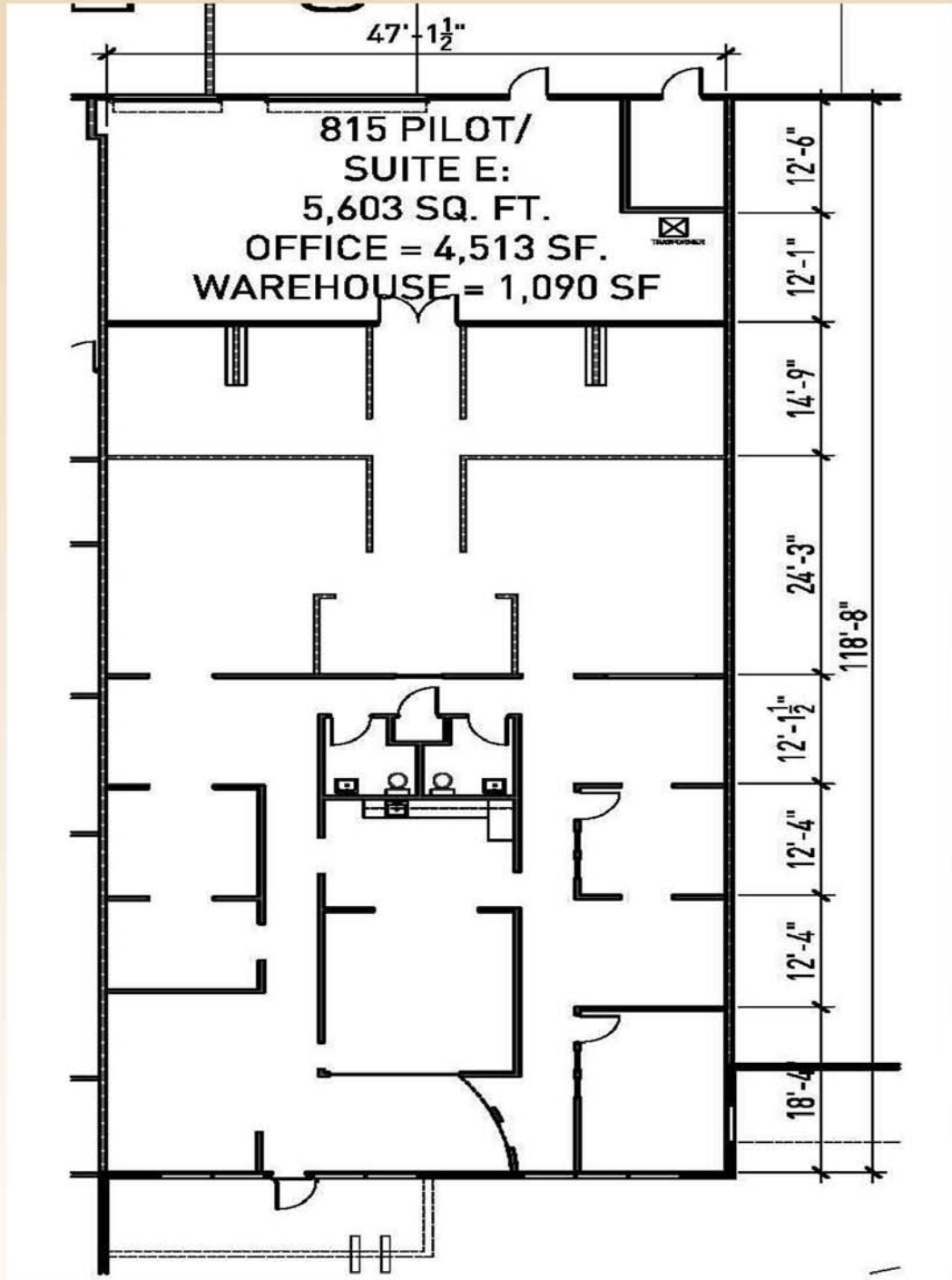


Hughes Airport Center

For Lease

815 PILOT RD.

SUITE E



Voit

REAL ESTATE SERVICES

10100 W. Charleston Blvd. #200
Las Vegas, NV 89135



Contact us for additional information:

702-734-4500 Main

702-733-7690 Fax

www.voitlasvegas.com

Kevin J. Higgins

Senior Vice President
(B.0016109.CORP)



Garrett Toft

Senior Associate
(BS.0061824)

Eric Larkin

Associate
(BS.0073906)



Hughes Airport Center

For Lease

815 PILOT RD. SUITE E



Voit

REAL ESTATE SERVICES

10100 W. Charleston Blvd. #200
Las Vegas, NV 89135



Contact us for additional information:

702-734-4500 Main
702-733-7690 Fax
www.voitlasvegas.com

Kevin J. Higgins
Senior Vice President
(B.0016109.CORP)



Garrett Toft
Senior Associate
(BS.0061824)

Eric Larkin
Associate
(BS.0073906)



Hughes Airport Center

For Lease

815 PILOT RD.
SUITE E



Voit

REAL ESTATE SERVICES

10100 W. Charleston Blvd. #200
Las Vegas, NV 89135



Contact us for additional information:

702-734-4500 Main
702-733-7690 Fax
www.voitlasvegas.com

Kevin J. Higgins
Senior Vice President
(B.0016109.CORP)



Garrett Toft
Senior Associate
(BS.0061824)

Eric Larkin
Associate
(BS.0073906)



REAL ESTATE SERVICES



Land Sales • Investment Sales • Development Consulting
Landlord & Tenant Representation

10100 W. Charleston Blvd., Suite 200 Las Vegas, NV 89135 | www.voitlasvegas.com
Main 702.734.4500 | Fax 702.733.7690 | higginsteam@voitco.com

Hughes Airport Center
815 Pilot Road
Las Vegas, NV

Available

Suite A/B +/-6,704
Suite E +/-5,603

| Zoning | Clear Height | Sprinklers | Parking | Electrical |
|--------|--------------|------------|---------|------------|
| | | | | |

| Terms | Suite # | Total SF | Office SF | Dock | Grade | Rate | NNN |
|-------|---------|----------|-----------|------|-------|--------|----------|
| | A/B | 6,704 | | | | \$1.20 | \$0.2311 |
| | E | 5,603 | 4,513 | | | \$1.20 | \$0.2311 |

Comments

815 Pilot Rd. is located within the Hughes Airport Center, a first class 420-acre business park, with close proximity to McCarran International Airport, I-15, I-215 and the Las Vegas "Strip".

This rear loading flex space features an expansive glass line and consists of a showroom, conference room, a number of perimeter and private offices, R&D area and a highly secured fenced dock/grade loading area.

Contacts

Kevin Higgins
Senior Vice President, SIOR

702.734.4500
khiggins@voitco.com

Garrett Toft
Senior Associate

702.734.4503
gtoft@voitco.com

Eric Larkin
Associate

702.734.4533
elarkin@voitco.com