



Hughes Airport Center

For Lease

950 PILOT ROAD LAS VEGAS, NV



Property Features:

- Located in Hughes Airport Center with Close Proximity to McCarran International Airport, I-15, I-215 and the Las Vegas "Strip"
- First Class 420 Acre 3.3 million sq. ft. Business Park
- Front Loading with Dock and Grade Level Doors
- Trailer Parking Available
- Frontage on Pilot Road
- Visit www.ciphughes.com



Professionally Managed By:



Voit

REAL ESTATE SERVICES

10100 W. Charleston Blvd. #200
Las Vegas, NV 89135



Contact us for additional information:

702-734-4500 Main

702-733-7690 Fax

www.voitlasvegas.com

Kevin J. Higgins 
Senior Vice President
(B.0016109.CORP)

Garrett Toft
Senior Associate
(BS.0061824)

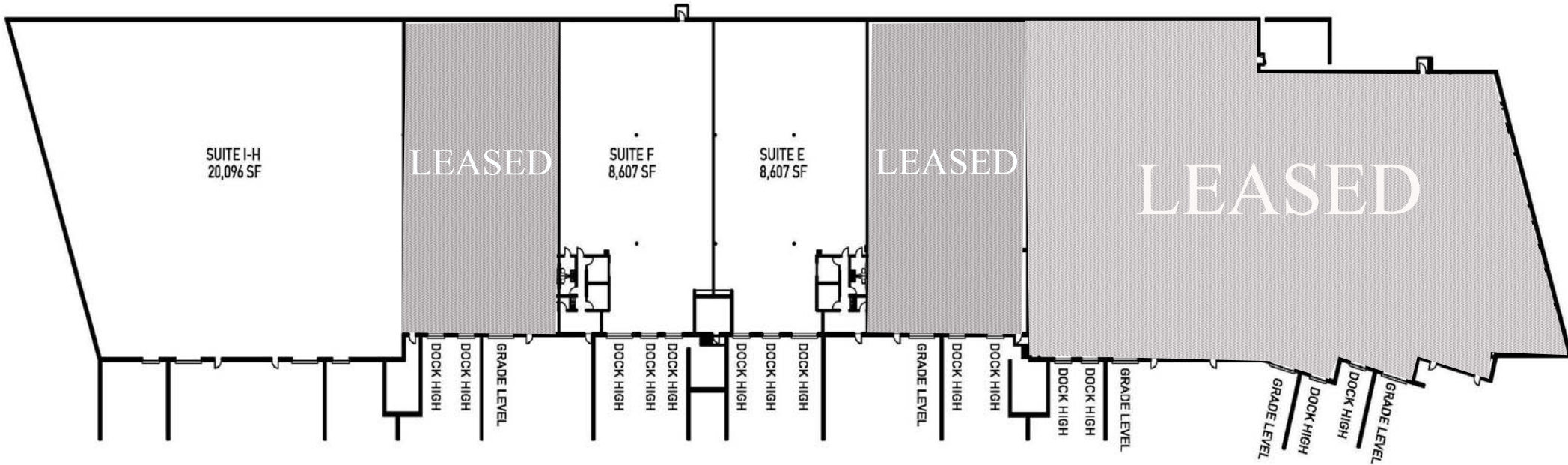
Eric Larkin
Associate
(BS.0073906)

The information contained herein has been obtained from sources we deem reliable. While we have no reason to doubt its accuracy, we do not guarantee it.



Hughes Airport Center

950 PILOT RD SITE PLAN



Voit

REAL ESTATE SERVICES

10100 W. Charleston Blvd. #200
Las Vegas, NV 89135



Contact us for additional information:

702-734-4500 Main
702-733-7690 Fax
www.voitlasvegas.com

Kevin J. Higgins 
Senior Vice President
(B.0016109.CORP)

Garrett Toft
Senior Associate
(BS.0061824)

Eric Larkin
Associate
(BS.0073906)

The information contained herein has been obtained from sources we deem reliable. While we have no reason to doubt its accuracy, we do not guarantee it.

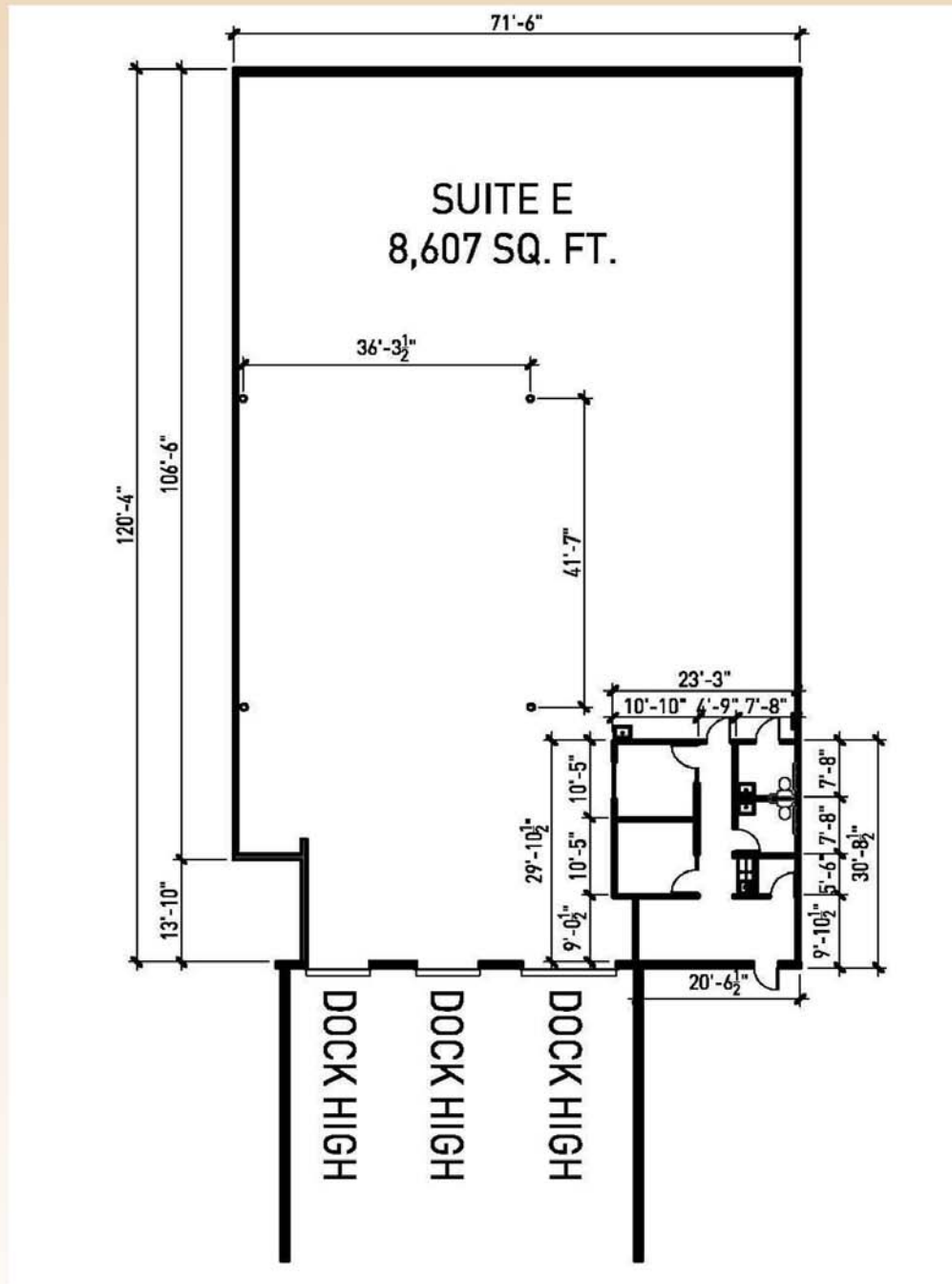


Hughes Airport Center

For Lease

950 PILOT RD

SUITE E



Voit

REAL ESTATE SERVICES

10100 W. Charleston Blvd. #200
Las Vegas, NV 89135



Contact us for additional information:

702-734-4500 Main

702-733-7690 Fax

www.voitlasvegas.com

Kevin J. Higgins
Senior Vice President
(B.0016109.CORP)



Garrett Toft
Senior Associate
(BS.0061824)

Eric Larkin
Associate
(BS.0073906)

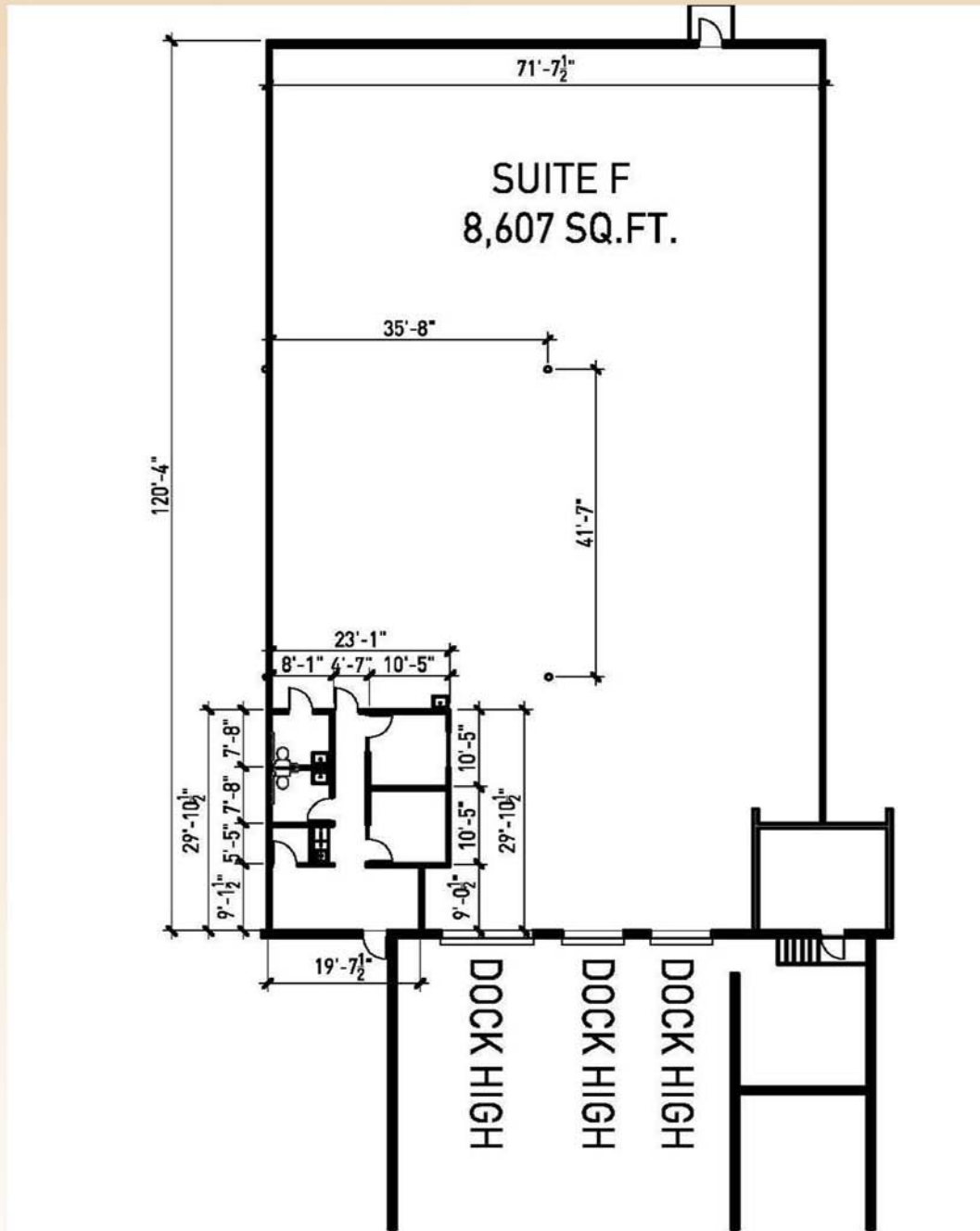


Hughes Airport Center

For Lease

950 PILOT RD

SUITE F



Voit

REAL ESTATE SERVICES

10100 W. Charleston Blvd. #200
Las Vegas, NV 89135



Contact us for additional information:

702-734-4500 Main
702-733-7690 Fax
www.voitlasvegas.com

Kevin J. Higgins
Senior Vice President
(B.0016109.CORP)



Garrett Toft
Senior Associate
(BS.0061824)

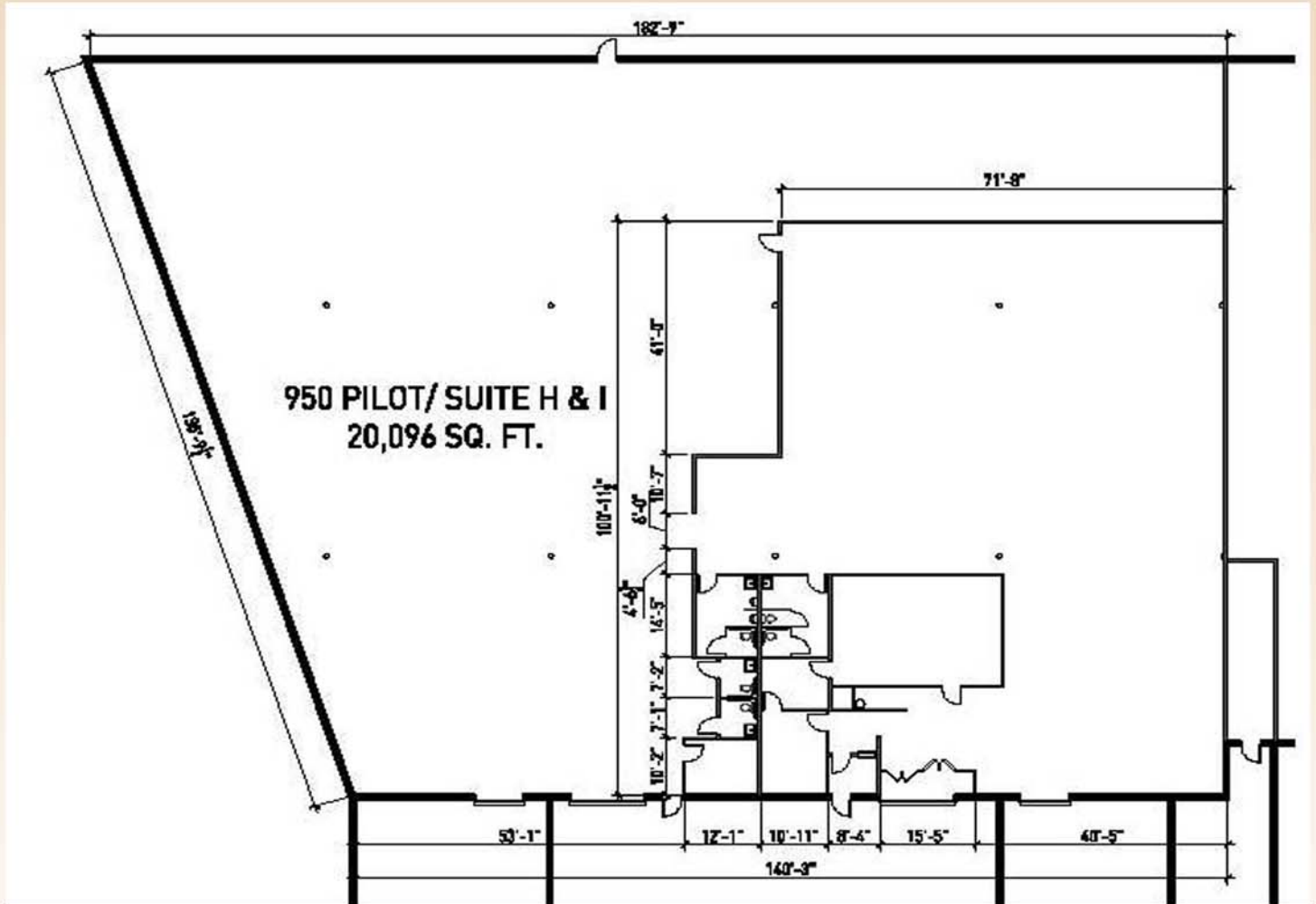
Eric Larkin
Associate
(BS.0073906)



Hughes Airport Center

For Lease

950 PILOT RD
SUITE H & I



Voit

REAL ESTATE SERVICES

10100 W. Charleston Blvd. #200
Las Vegas, NV 89135



Contact us for additional information:

702-734-4500 Main
702-733-7690 Fax
www.voitlasvegas.com

Kevin J. Higgins
Senior Vice President
(B.0016109.CORP)



Garrett Toft
Senior Associate
(BS.0061824)

Eric Larkin
Associate
(BS.0073906)



REAL ESTATE SERVICES

HIGGINS TEAM

Land Sales • Investment Sales • Development Consulting
Landlord & Tenant Representation

10100 W. Charleston Blvd., Suite 200 Las Vegas, NV 89135 | www.voitlasvegas.com
Main 702.734.4500 | Fax 702.733.7690 | higginsteam@voitco.com

Hughes Airport Center
950 Pilot Road
Las Vegas, NV

Available

Suite E: ±8,607 sq. ft.

Suite F: ±8,607 sq. ft.

Suite H & I: ±20,096 sq. ft.

Zoning	Clear Height	Sprinklers	Parking	Electrical
M1	± 24'	Yes	1.54/1,000	277/480 V, 3-Phase

Terms						
Suite #	Total SF	Office SF	Dock	Grade	Rate	NNN
E	±8,607	±625	3	0	\$0.29 *	\$0.2058
F	±8,607	±625	3	0	\$0.29 *	\$0.2058
H & I	±20,096		2	1	\$0.29 *	\$0.2058

Comments

Landlord is now offering **COMMISSION BONUSES!** Call for details.

* Rates quoted are for the 1st year of a minimum 3 year lease term.

Contacts

Kevin Higgins <i>Senior Vice President, SIOR</i> 702.734.4500 khiggins@voitco.com	Garrett Toft <i>Senior Associate</i> 702.734.4503 gtoft@voitco.com	Eric Larkin <i>Associate</i> 702.734.4533 elarkin@voitco.com
---	--	--



Hughes Airport Center

For Lease

950 PILOT ROAD
LAS VEGAS, NV



Voit

REAL ESTATE SERVICES

10100 W. Charleston Blvd. #200
Las Vegas, NV 89135



Contact us for additional information:

702-734-4500 Main

702-733-7690 Fax

www.voitlasvegas.com

Kevin J. Higgins
Senior Vice President
(B.0016109.CORP)



Garrett Toft
Senior Associate
(BS.0061824)

Eric Larkin
Associate
(BS.0073906)

The information contained herein has been obtained from sources we deem reliable. While we have no reason to doubt its accuracy, we do not guarantee it.